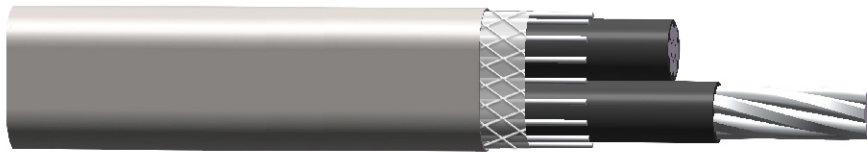


# 8000 Series Aluminium Alloy Conductor SEU Service Entrance Cable



## Application

Mainly used to convey power from the service drop to the meter base and from the meter base to the distribution panel board. SEU can also be used in certain branch circuits as permitted by 1999 NEC. It is used in wet or dry locations.

## Construction

The stranded compacted 8000 series aluminium alloy conductor is insulated with black XLPE. The insulated conductors are cabled together with Al-alloy concentric neutral and fiberglass reinforced polyester tape binder, and oversheathed by grey sunlight resistant PVC.

## Technical Data

Rated Voltage	600V
Operating Temperature	Max permissible continuous operating temperature of conductor shall not exceed 90°C.
Standard	UL 44 and UL854, Federal Specification J-C-30B or other standards required by customers.

### Aluminium SEU Service Entrance Cable

Conductor*			Conductor*		
No. of Cores	Size AWG	Approx. Overall Diameter inch	No. of Cores	Size AWG	Approx. Overall Diameter inch
2	8-2	0.386	3	1/0-1/0-1/0	0.680×1.125
2	6-2	0.430	3	2/0-2/0-2/0	0.736×1.221
2	4-2	0.499	3	3/0-3/0-3/0	0.826×1.358
2	2-2	0.569	3	4/0-4/0-4/0	0.878×1.462
3	8-8-8	0.386×0.600	3 (reduced neutral)	4-4-6	0.474×0.775
3	6-6-6	0.430×0.687	3 (reduced neutral)	2-2-4	0.554×0.910
3	4-4-4	0.499×0.800	3 (reduced neutral)	1/0-1/0-2	0.657×1.101
3	2-2-2	0.569×0.925	3 (reduced neutral)	2/0-2/0-1	0.720×1.205
3	1-1-1	0.643×1.051	3 (reduced neutral)	4/0-4/0-2/0	0.835×1.419

\*Individual conductors rated XHHW-2